

USB-DMX STAGE-PROFI MK3

User Manual



**DMX
4
ALL**
WWW.DMX4ALL.EU

Description

The **USB-DMX STAGE-PROFI MK3** Interface is designed for the rough stage environment. Taken in an aluminium housing with Neutrik-XLR-female connector and screwable USB-connector plug, this interface provides everything what's needed for a harsh operation environment. The galvanically isolated DMX-output protects from electrical signals via DMX-Bus.

An external power supply during the operation with a PC is not necessary because the USB-port can be used as power supply.

To run this **USB-DMX STAGE-PROFI MK3** Interface with existing software a virtual COM-port must be generated. It allows the data transfer like the usage with a conventionally serial interface. Alternatively you can access directly to the USB-driver from the user software.

Technical Data

DMX-OUT:	up to 512 channels (44 Frames/sec.by 512 DMX-channels) galvanically isolated DMX
PC-connection:	USB
Power supply:	250mA via USB
USB-driver:	CDC-driver (Virtual COM Port) Windows® Version:Windows® 2000 or higher

Features STAGE-PROFI MK3 design

- Aluminium housing
- Neutrik® XLR-female connector with 3 or 5 pin available
- Screwable USB connection
- DMX-output galvanically isolated



Screwable USB-connection



3-pin XLR-female connector
or

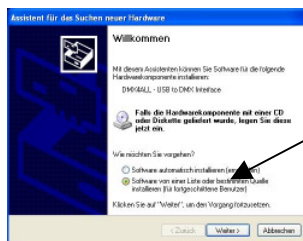


5-pin XLR-female
connector

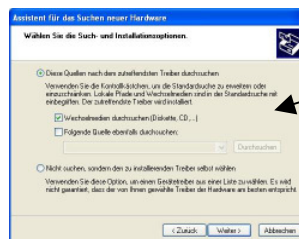
Windows XP Installation

The **USB-DMX STAGE-PROFI MK3** installation based on Windows® internal CDC-driver. This is a RS232-Emulation via USB since Windows2000. During the connection a virtual COM-port will be generated on the PC, every Windows program can access to it like to a RS232-interface.

After connecting the **USB-DMX STAGE-PROFI MK3** please select the driver from the attached CD.



Install software from a table or a specific source



Search in removable media

Execute the following installation steps in accordance to the Windows instructions until the installation has finished.

Deactivate the energy-saving mode:

In the system controls device manager USB devices are separated from the power supply from Windows XP and Windows Vista by default, if they aren't called permanently. This can cause problems for the USB-communication. To avoid this, please make the following settings:

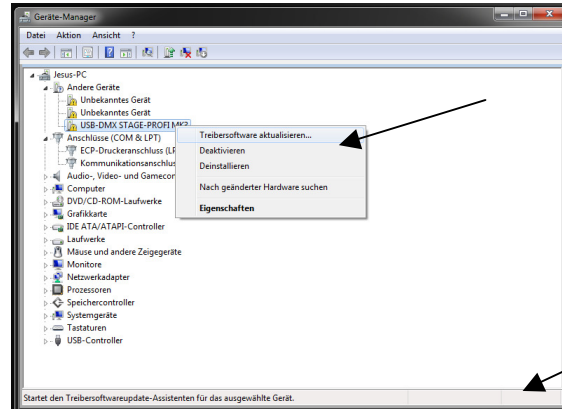
Deactivate the function *Computer can shut down device to save energy* under *energy administration*.

Note: Perhaps, the changes will be adopted after a restart.

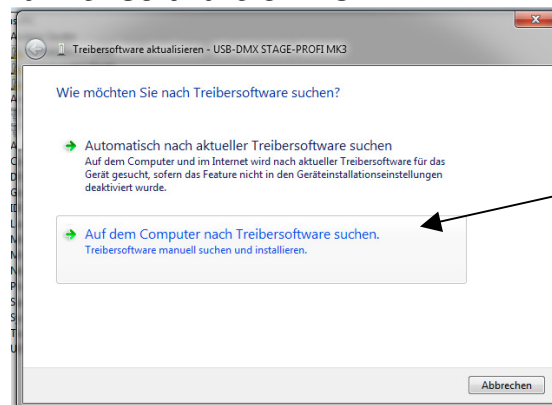
Windows 7 Installation

For installation please follow the single installation steps:

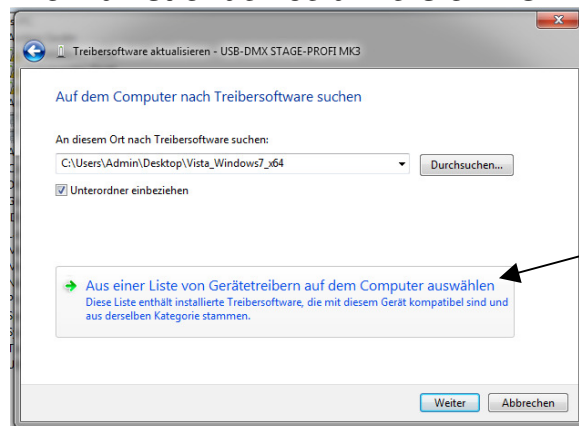
1. Connect the interface to an USB-port and wait until Windows has finished the driver search.
2. Now, open the device manager and click with the right mouse button to the interface. Select *update driver device*



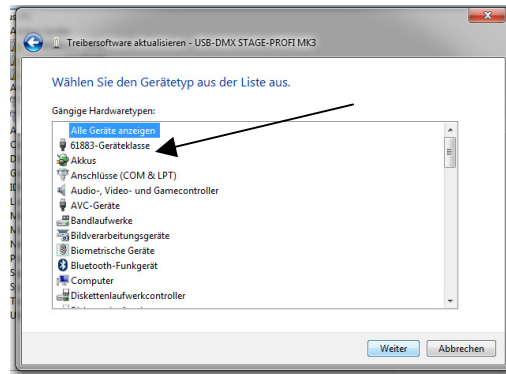
3. Select ***Search for driver software on PC***



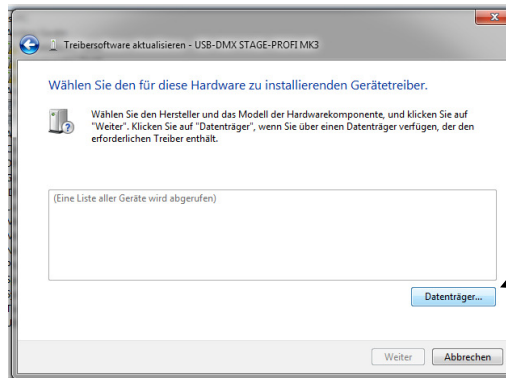
4. Please select ***Pick from a list of device drivers on PC***



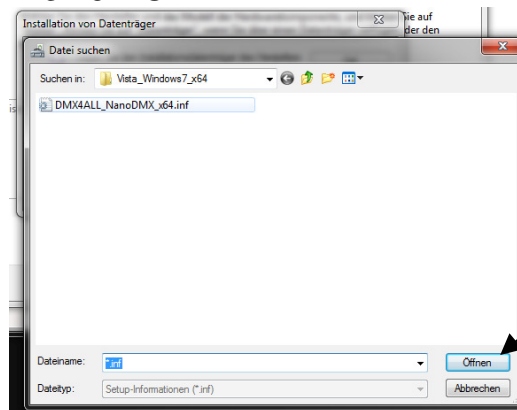
5. ***Show all devices*** and then click ***Next***



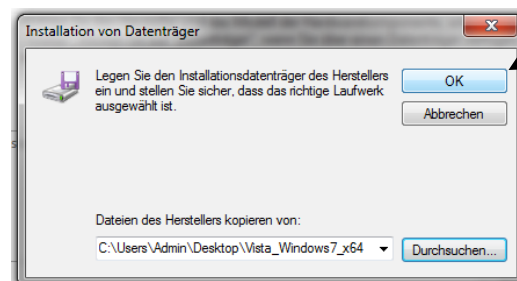
6. Select **data medium**



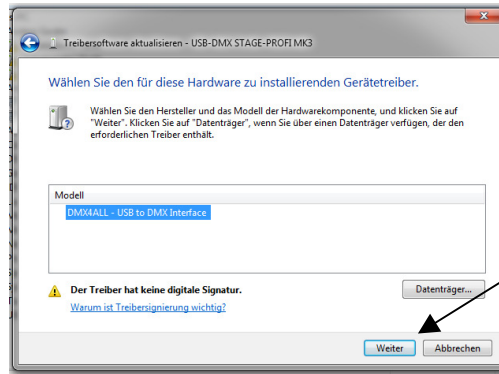
7. Now, select the **inf-file** from CD



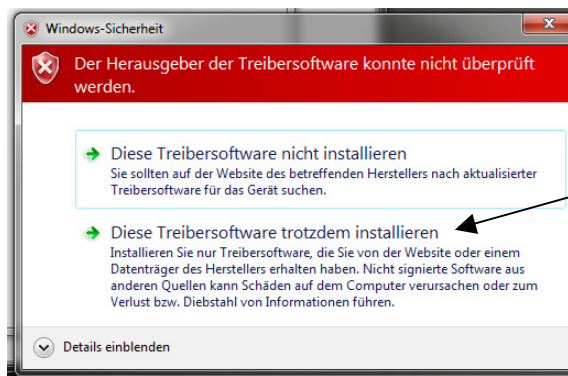
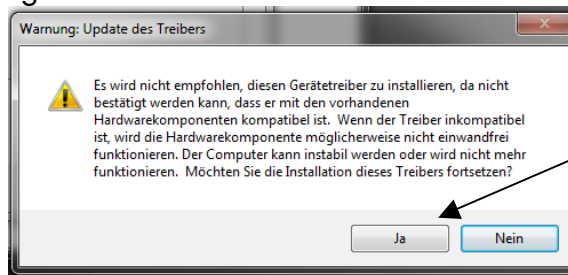
8. Click **OK**



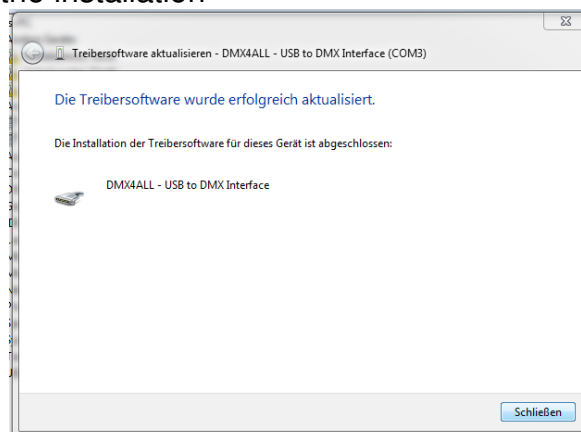
9. Click **Next**



10. Certify the warnings with **Yes** and **install the driver software nevertheless**

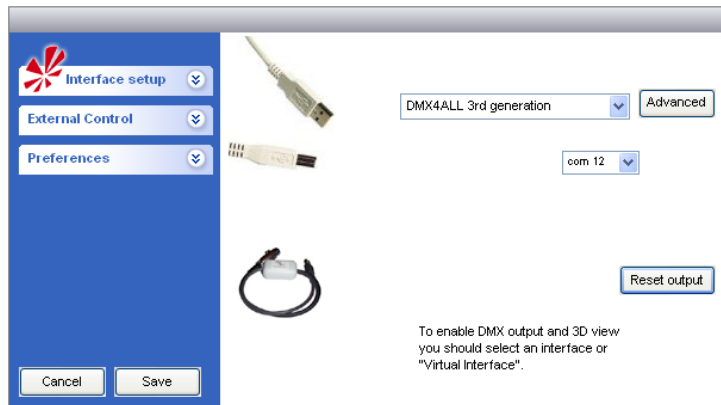


11. After all **Finish** the installation



Information by using with the program FreeStyler

Select in the *Interface Setup* DMX4ALL as device and select the according COM-port:



If the COM-port at which the interface is connected is not be known you can identify it with the attached DMX-Configurator by executing the setting *AutoDetect*.

Settings

Please use the program DMX-Configurator to configure the interface. You find the possibilities for adjusting under *Settings*→*Hardware settings* shown as follows:

Min Output channels adjust the number of DMX-channels. By clicking the right mouse button the selection menu with the number of channels opens.

Note: If you have adjust the minimum number of output channels and these call a higher channel, so the DMX-signal will be generated automatically up to this channel. The number of channels will NOT be saved permanently.

Disable USB serial number

An identical USB-identification will be used for all Interfaces.

Use unique USB serial number

A unique USB-identification will be used for each interface.

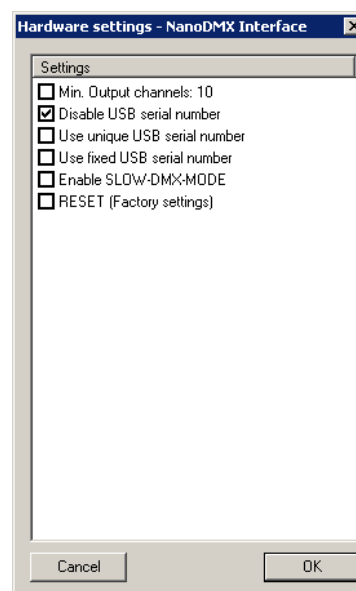
Use fixed USB serial number

The same serial number will be used for the USB-identification.

Enable SLOW-DMX-MODE

The number of DMX-frames per sec. will be reduced to 33.

The interface will be configured after confirming with OK and the settings will be stored permanently. The settings still be stored after turn off and can only be changed by renewed configuration.



Equipment

USB-cabel 1m - screwable



XLR-cable 3pin



XLR-Adapter



CE-conformity



This assembly (board) is controlled by a microprocessor and uses high frequency (8MHz). To get the characteristics of the assembly in relation to the CE-conformity, an installation in a compact metal casing is necessary.

Risk-Notes

You purchased a technical product. Conformance to the best available technology the following risks should not be excluded:

Failure risk: The device can drop out partially or completely at any time without warning. To reduce the probability of a failure a redundant system structure is necessary.

Initiation risk: For the installation of the board, the board must be connected and adjusted to foreign components according to the device paperwork. This work can only be done by qualified personnel, which read the full device paperwork and understand it.

Operating risk: The Change or the operation under special conditions of the installed systems/components could as well as hidden defects cause to breakdown within the running time.

Misusage risk: Any nonstandard use could cause incalculable risks and is not allowed.

Warning: It is not allowed to use the device in an operation, where the safety of persons depend on this device.



DMX4ALL GmbH
Reiterweg 2A
D-44869 Bochum
Germany

© Copyright 2012 DMX4ALL GmbH

All rights reserved. No part of this manual may be reproduced in any form (photocopy, pressure, microfilm or in another procedure) without written permission or processed, multiplied or spread using electronic systems.

All information contained in this manual was arranged with largest care and after best knowledge. Nevertheless errors are to be excluded not completely. For this reason I see myself compelled to point out that I can take over neither a warranty nor the legal responsibility or any adhesion for consequences, which decrease/go back to incorrect data. This document does not contain assured characteristics. The guidance and the characteristics can be changed at any time and without previous announcement.