

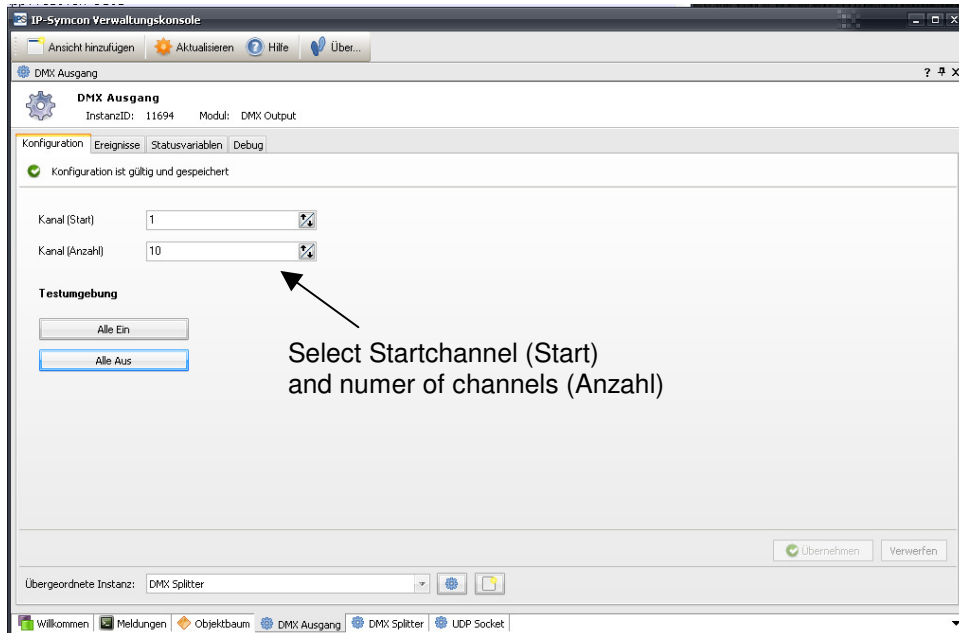
Application Note

Using ArtNet-DMX STAGE-PROFI 1.1
with IP-Symcon

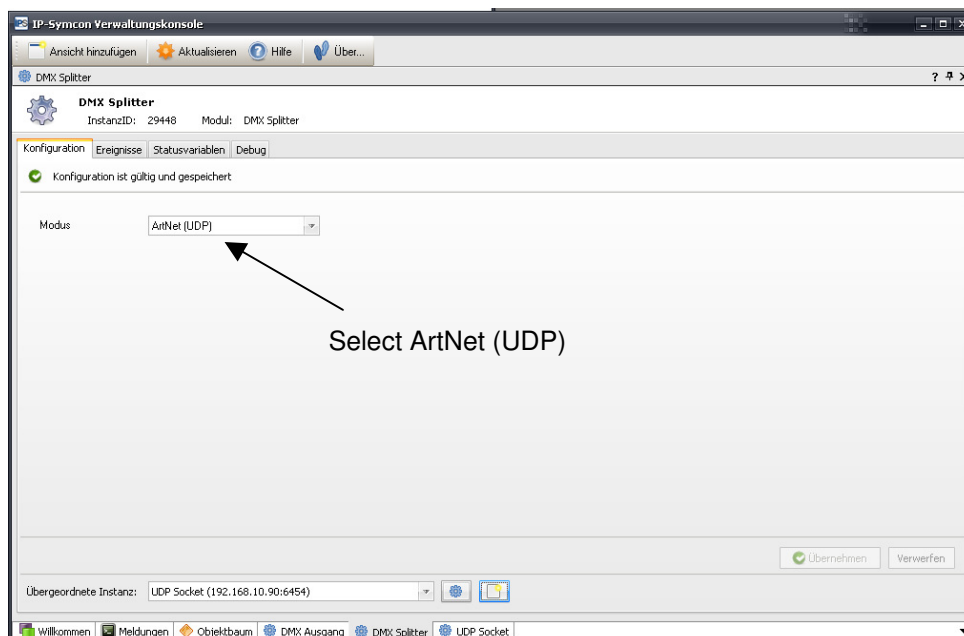
DMX [®]
4
ALL

IP-Symcon Configuration

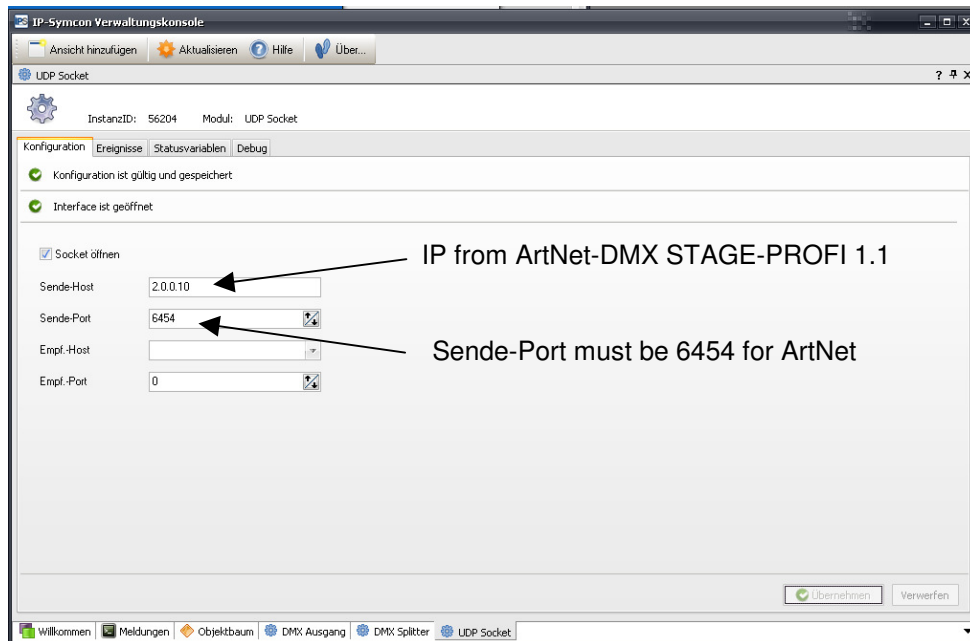
DMX-Ausgang :



DMX-Splitter:



UDP Socket:





DMX4ALL GmbH
Reiterweg 2A
D-44869 Bochum
Germany

© Copyright 2013 DMX4ALL GmbH

All rights reserved. No part of this manual may be reproduced in any form (photocopy, pressure, microfilm or in another procedure) without written permission or processed, multiplied or spread using electronic systems.

All information contained in this manual was arranged with the greatest care and after the best knowledge. Nevertheless, errors are to be excluded not completely. For this reason, I see myself compelled to point out that I can take over neither a warranty nor the legal responsibility or any adhesion for consequences, which decrease/go back to incorrect data. This document does not contain assured characteristics. The guidance and the characteristics can be changed at any time and without previous announcement.