

Application Note

Setting the IP-address and
Netmask with the IP-Configurator

DMX [®]
4
ALL

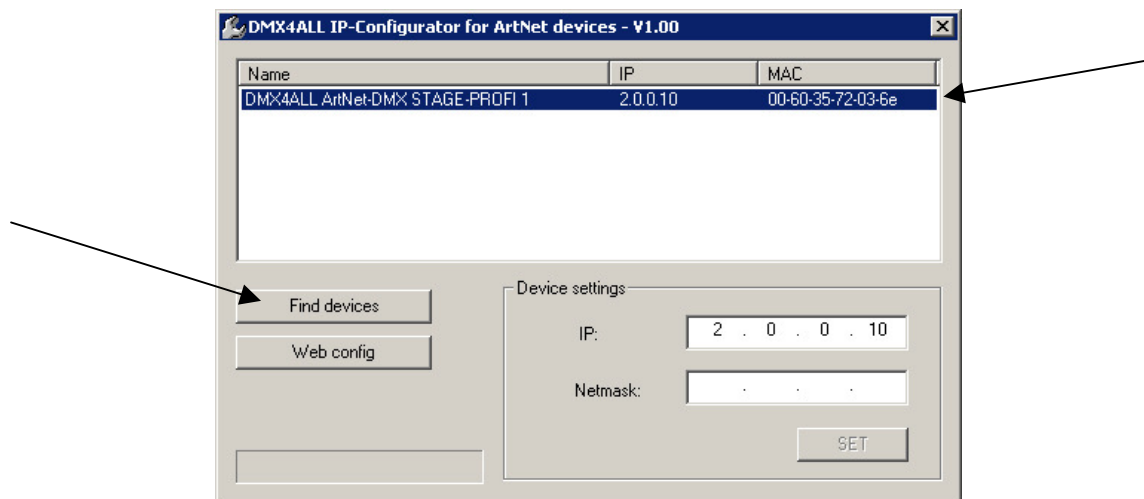
Description

The **IP-Configurator** allows adjustment of the address and the netmask also if the PC's network setting is not within the IP-area of the DMX4ALL ArtNet Interface.

Configure the DMX4ALL ArtNet Interface

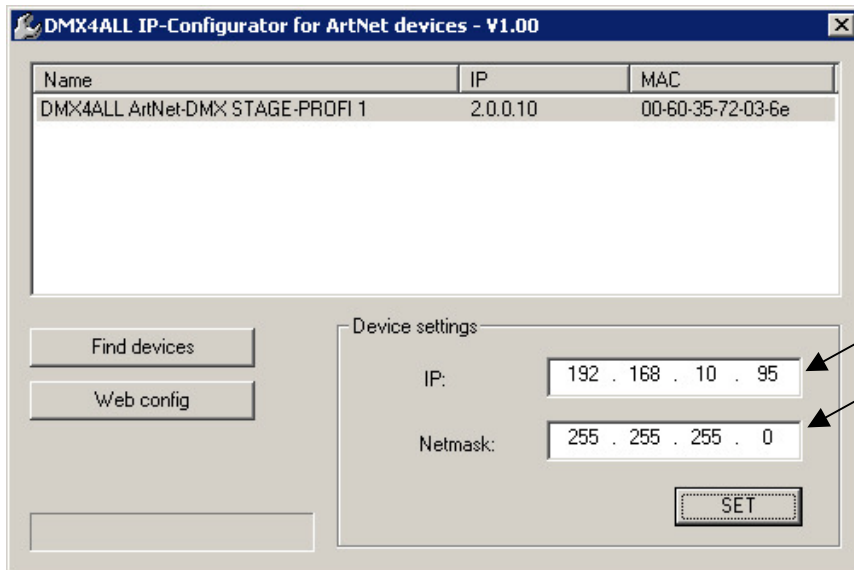
To adjust the network settings at first the DMX4ALL ArtNet Interface must be demand.

Therefore the software IP-configurator must be started. During the start the interface will be searched. If the search should be repeated please click **Find devices**.



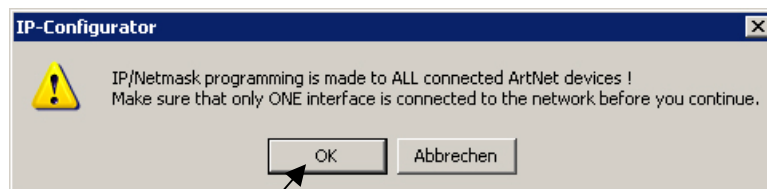
For the reason that only the configuration occurs for the network settings ensure that only the interface to configure is within the network and is found !

Please click to the entry in the table and enter the IP and netmask.

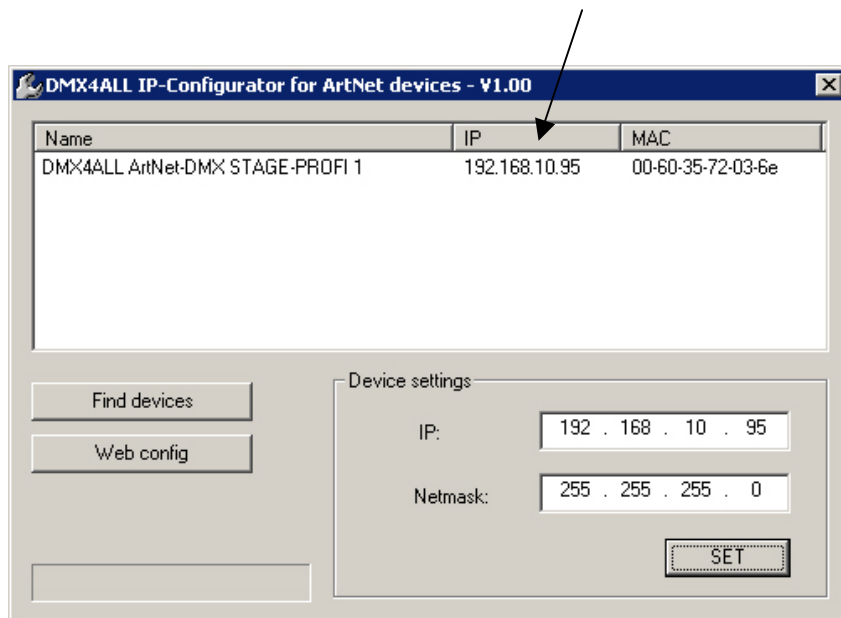


Click **SET** to start the configuration.

Verify the confirmation request with **OK**.



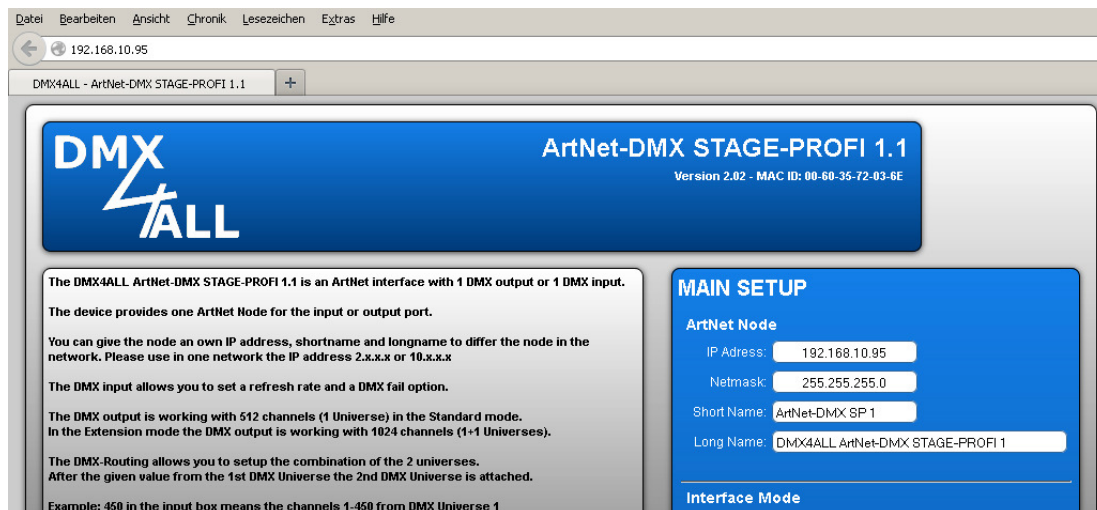
The configuration will be carried out and afterwards the table entry will be updated.



Now the DMX4ALL ArtNet Interface is configured with the entered network settings. The further settings can be performed via the web browser.

For starting the web browser click to **Web config**.

The web browser opens and the configuration site loads:



Compatible devices

The software IP-Configurator is compatible with all DMX4ALL Interfaces.

Currently the following devices are compatible:

- ArtNet-DMX STAGE-PROFI 1.1
- ArtNet-DMX-Universe 4.1
- ArtNet-DMX-Universe DR 4.1
- ArtNet-LED-Dimmer 4
- ArtNet-LED-Dimmer 4R
- ArtNet-LED-Dimmer 6
- ArtNet-LED-Dimmer 6R
- ArtNet Multi PixxControl



The software IP-Configurator doesn't act together with the LAN-DMX STAGE-PROFI Interface !

- ▶ The network configuration is explained in the user manual.



DMX4ALL GmbH
Reiterweg 2A
D-44869 Bochum
Germany

© Copyright 2014 DMX4ALL GmbH

All rights reserved. No part of this manual may be reproduced in any form (photocopy, pressure, microfilm or in another procedure) without written permission or processed, multiplied or spread using electronic systems.

All information contained in this manual was arranged with largest care and after best knowledge. Nevertheless errors are to be excluded not completely. For this reason I see myself compelled to point out that I can take over neither a warranty nor the legal responsibility or any adhesion for consequences, which decrease/go back to incorrect data. This document does not contain assured characteristics. The guidance and the characteristics can be changed at any time and without previous announcement.